



# OPTIONS LIST

*CLICK ON CATEGORY NAME TO VIEW RELATED PRODUCTS*

## STRUCTURAL OPTIONS

- CLEAR SPAN
- CUSTOM WALL OPENINGS
- EXTERIOR DOORS AND HARDWARE
- EXTERIOR STAIRS
- OVERHEAD DOORS
- WINDOWS
- WINDOWS - CONCESSION STAND

## CLIMATE CONTROL OPTIONS

- COOLING AND HEATING
- FANS AND VENTS
- INSULATION

## FINISH OUT OPTIONS

- BUNK BEDS
- ELECTRICAL
- EXTERIOR PAINT
- FLOORING FINISHES
- FRP
- KITCHENETTES
- ORGANIZATION
- PLUMBING
- WORK SURFACES

## ACCESSORIES

- FASTENING MECHANISMS
- LOCK BOX
- TRAILERS

## CLEAR SPAN

### FS-M-CLEAR SPAN



- Remove up to an entire side wall of two containers to create large interior spaces
- Cut opening framed by 2" x 2" welded, painted steel tubing
- Structurally reinforced with steel beams and/or columns
- Includes roof flashing

## ABOUT FALCON STRUCTURES

Founded in 2003, Falcon Structures creates safe places by re-purposing shipping containers. We provide living, working, and storage solutions for a wide variety of industries including energy, construction, general industry, and the military.



# CUT AND FRAME

OPTIONS

## CUSTOM WALL OPENINGS CREATED TO YOUR MEASUREMENTS

FS-M-CUT AND FRAME



- Falcon plasma cutting, welding and prep & paint
- Cut opening framed by 2" x 2" welded, painted steel tubing
- Openings up to 8' wide x 8' tall without structural enhancements
- Delivered ready for your custom buildout

## ABOUT FALCON STRUCTURES

Founded in 2003, Falcon Structures creates safe places by re-purposing shipping containers. We provide living, working, and storage solutions for a wide variety of industries including energy, construction, general industry, and the military.

© Falcon Structures 2016 v.06142016

[www.FalconStructures.com](http://www.FalconStructures.com)

CONTACT US TODAY

**512-231-9603**

Sales@FalconStructures.com  
7717 Gilbert Rd, Manor, Texas 78653



# EXTERIOR DOOR AND HARDWARE

OPTIONS

## PERSONNEL DOOR

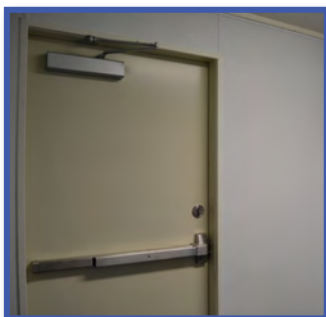
FS-M-DOOR-UTILITY



- 3'-0" x 6'-8" secure steel door welded into container
- Includes lever handle and deadbolt
- Rain guard for additional weather protection

## EGRESS DOOR

FS-M-DOOR-EGRESS



- 3'-0" x 6'-8" secure steel door welded into container
- Includes panic bar with exterior lever, closer, and deadbolt

## HARDWARE UPGRADES

- Keypad entry **FS-M-KEYPAD ENTRY**
- Latch protector **FS-M-LATCH GUARD**
- Panic bar and closer also available individually  
**FS-M-PANIC BAR**  
**FS-M-CLOSER**



## ABOUT FALCON STRUCTURES

Founded in 2003, Falcon Structures creates safe places by re-purposing shipping containers. We provide living, working, and storage solutions for a wide variety of industries including energy, construction, general industry, and the military.



## FS-M-STAIRS-STEEL-EXT

- Painted steel staircase ascends approximately 9 ft to 3' x 3' platform
- OSHA compliant handrails
- Easy bolt-on site setup
- Available in 10 ft height for high cube containers

## ABOUT FALCON STRUCTURES

Founded in 2003, Falcon Structures creates safe places by re-purposing shipping containers. We provide living, working, and storage solutions for a wide variety of industries including energy, construction, general industry, and the military.



# OVERHEAD DOORS

OPTIONS



## FS-M-DOOR-ROLL UP

- Tan painted, light-gauge aluminum roll-up door mounted to a welded steel frame
- Includes rain pan installed below container floor level to keep water out
- Standard dimensions are 6'-8" tall with option for 6' or 8' wide
- Additional sizes available
- Standard light-gauge, exterior locking or heavy duty industrial gauge available

## ABOUT FALCON STRUCTURES

Founded in 2003, Falcon Structures creates safe places by re-purposing shipping containers. We provide living, working, and storage solutions for a wide variety of industries including energy, construction, general industry, and the military.

© Falcon Structures 2016 v.06142016

[www.FalconStructures.com](http://www.FalconStructures.com)

CONTACT US TODAY

**512-231-9603**

Sales@FalconStructures.com  
7717 Gilbert Rd, Manor, Texas 78653



# WINDOWS

OPTIONS

## 3' x 3' OPERABLE

FS-M-WINDOW-3X3



- Energy-saving, double-pane, vinyl clad construction
- Optional burglar bars for added security
- Mounted securely inside a welded and painted steel frame
- Includes installed vinyl mini-blinds

## 2'-8" x 1'-2" HORIZONTAL SLIDER

FS-M-WINDOW-32X14



- Energy-saving, double-pane, vinyl clad construction
- Positioned high for privacy
- Mounted securely inside a welded and painted steel frame

## ABOUT FALCON STRUCTURES

Founded in 2003, Falcon Structures creates safe places by re-purposing shipping containers. We provide living, working, and storage solutions for a wide variety of industries including energy, construction, general industry, and the military.

© Falcon Structures 2016 v.06142016

[www.FalconStructures.com](http://www.FalconStructures.com)

CONTACT US TODAY

512-231-9603

Sales@FalconStructures.com  
7717 Gilbert Rd, Manor, Texas 78653



# CONCESSION WINDOWS

OPTIONS



## FS-M-CONCESSION WIND

- Tan painted, light-gauge aluminum roll-up door mounted to a welded steel frame
- Includes stainless steel countertop designed to keep water out when door is closed
- Standard dimensions are 4' tall with option for 6' or 8' wide
- Interior locking or heavy duty industrial gauge also available

## ABOUT FALCON STRUCTURES

Founded in 2003, Falcon Structures creates safe places by re-purposing shipping containers. We provide living, working, and storage solutions for a wide variety of industries including energy, construction, general industry, and the military.

© Falcon Structures 2016 v.11302016

[www.FalconStructures.com](http://www.FalconStructures.com)

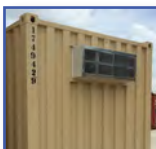
CONTACT US TODAY

**512-231-9603**

Sales@FalconStructures.com  
7717 Gilbert Rd, Manor, Texas 78653

## PTAC UNIT

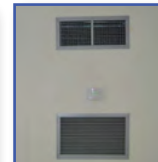
FS-M-PTAC-15K



- Ideal conditioning for 160-320 sf
- 15K power with 3kW heat
- Industry standard sizes and specs
- 5 year manufacturer's warranty

## BARD UNIT

FS-M-BARD-2T



- For use in personnel/equipment use or harsh climates
- 2T capacity with 5kW heat
- 5 year manufacturer's warranty

## THROUGH-THE-WALL UNIT

FS-M-TTW-12K



- Ideal conditioning for 80-160 sf
- 12K power with 2kW heat
- Reduced profile for tight spaces

## BASEBOARD HEATER

FS-M-BASEBOARD HEATER



- Ideal for cold climates requiring additional heat
- 5ft long fixture providing 1250W heat

## ABOUT FALCON STRUCTURES

Founded in 2003, Falcon Structures creates safe places by re-purposing shipping containers. We provide living, working, and storage solutions for a wide variety of industries including energy, construction, general industry, and the military.

## 8" ACTIVE VENT

FS-M-ACTIVE VENT-8"



- Active ventilation fan pulls air outside
- 180 CFM direct-to-outdoors airflow
- Exterior vent cover helps keep water out

## 12" PASSIVE VENT

FS-M-PASS VENT-PAIR-12X12



- Passive ventilation for storage
- 12" x 12" venting area with leak-resistant exterior vent cover
- Recommended to be used in pairs for optimal air flow

## ABOUT FALCON STRUCTURES

Founded in 2003, Falcon Structures creates safe places by re-purposing shipping containers. We provide living, working, and storage solutions for a wide variety of industries including energy, construction, general industry, and the military.

## STYROFOAM

### FS-M-STYRO INSUL



- Basic, low-cost climate control
- Maximizes useable interior space
- 1" foil-backed styrofoam on walls and ceiling provides R-4 rated insulation and smooth, white appearance

## BATT

### FS-M-BATT INSUL



- Basic insulation for standard interior finish-outs
- Fiberglass insulation rated R-13 on walls and R-19 on ceiling
- For use with wood framing and plywood walls

## SPRAY FOAM

### FS-M-SF



TEXTURE  
CLOSE-UP

- Space-saving, highest performance
- Highly efficient continuous rigid foam available in 1" (R-6), 2" (R-12), and 3" (R-18) options
- For use with or without interior framing and plywood
- Also available for application underneath container floor

## MINERAL ROCK

### FS-M-MIN ROCK INSUL



- Fire-resistant, water-repelling insulation for industrial interior finish-outs
- Natural stone wool insulation rated R-12 on walls and R-24 on ceiling
- Recommended for use with metal framing

## ABOUT FALCON STRUCTURES

Founded in 2003, Falcon Structures creates safe places by re-purposing shipping containers. We provide living, working, and storage solutions for a wide variety of industries including energy, construction, general industry, and the military.



# BUNK BEDS

OPTIONS



## FS-M-BUNK BED-TWIN

- Twin XL sized heavy duty steel frame
- Foam-core mattresses included
- Comes pre-assembled and secured to wall
- Can be converted into two single cots

## ABOUT FALCON STRUCTURES

Founded in 2003, Falcon Structures creates safe places by re-purposing shipping containers. We provide living, working, and storage solutions for a wide variety of industries including energy, construction, general industry, and the military.

© Falcon Structures 2016 v.12012016

[www.FalconStructures.com](http://www.FalconStructures.com)

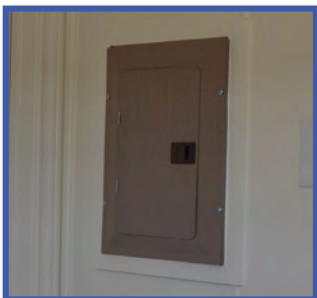
CONTACT US TODAY

**512-231-9603**

Sales@FalconStructures.com  
7717 Gilbert Rd, Manor, Texas 78653

## ELECTRICAL PANEL

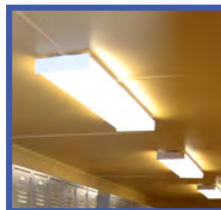
FS-M-PANEL



- Standard size 220V, 125A capacity
- Additional specs and capacities available
- Easily connected exterior service entrance

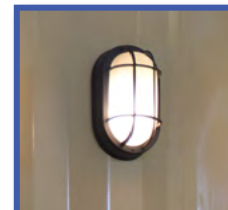
## LIGHTS

FS-M-FLUOR LIGHT



- 4ft or 2ft two-bulb surface-mounted fixture
- Efficient LED bulbs available

FS-M-SECURITY LIGHT



- Exterior-mounted, bright incandescent fixture adds security and ease of night use

## NETWORK MOUNTING BOARD

FS-M-NET MOUNT BOARD



- Fire-resistant plywood mounting board for phone and network center, with optional cable-pulls
- Includes adjacent 110V duplex outlet

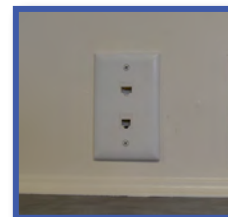
## POWER & DATA DROPS

FS-M-OUTLET



- Standard 110V duplex outlet
- Additional specs and connections available

FS-M-ETHERNET PORT



- Duplex ethernet port
- Additional specs and connections available

## ABOUT FALCON STRUCTURES

Founded in 2003, Falcon Structures creates safe places by re-purposing shipping containers. We provide living, working, and storage solutions for a wide variety of industries including energy, construction, general industry, and the military.



# EXTERIOR PAINT

OPTIONS

## INDUSTRIAL ALKYD ENAMEL

FS-M-PAINT



RAL 1001



TAN

RAL 7035



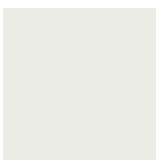
LIGHT  
GREY

RAL 7037



DUSTY  
GREY

RAL 9003



SIGNAL  
WHITE

RAL 3020



TRAFFIC  
RED

RAL 1023



TRAFFIC  
YELLOW

RAL 5002



ULTRA-  
MARINE  
BLUE

RAL 6002



LEAF  
GREEN

- Rust-resistant PPG industrial alkyd enamel
- Custom colors and color matching available

## TYPE II BOX PAINT PREP

FS-M-PREP

- Preparation for Type II used container to receive paint with grinding and cleaning
- Reduces and seals in rust to help paint resist peeling and degrading and prolong its lifespan

## WHITE ROOF PAINT

FS-M-PAINT-WHITE ROOF

- Elastomeric white roof coating helps reflect sunlight and heat
- Available individually or in addition to alkyd enamel paint

## ABOUT FALCON STRUCTURES

Founded in 2003, Falcon Structures creates safe places by re-purposing shipping containers. We provide living, working, and storage solutions for a wide variety of industries including energy, construction, general industry, and the military.

© Falcon Structures 2018 v.062818

[www.FalconStructures.com](http://www.FalconStructures.com)

CONTACT US TODAY

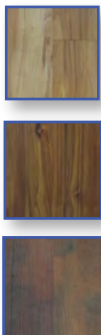
512-231-9603

[Sales@FalconStructures.com](mailto:Sales@FalconStructures.com)

7717 Gilbert Rd, Manor, Texas 78653

## VINYL PLANK

### FS-M-FLOOR-VINYL PLANK



- Durable, water-resistant, locking vinyl plank in faux-wood finish
- Available in light, medium, and dark brown tones

## COIN VINYL SHEET

### FS-M-FLOOR-COIN VINYL



- Protect wood container floor from water and easily clean up spills with continuous-sheet roll vinyl flooring
- Available in grey and tan

## EPOXY

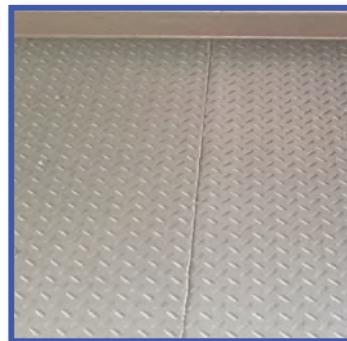
### FS-M-FLOOR-EPOXY



- Increase container floor durability with epoxy coating
- Grey in color with non-slip finish available

## WELDED STEEL

### FS-M-FLOOR-STEEL

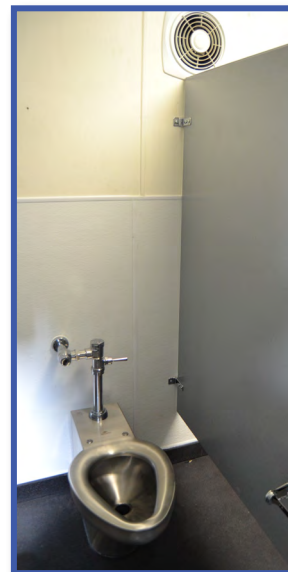


- Continuously-welded steel sheets extend slightly up walls to create a watertight barrier over container floor
- Comes with or without high strength anti-skid epoxy coating
- Available in tread plate or flat steel texture

## ABOUT FALCON STRUCTURES

Founded in 2003, Falcon Structures creates safe places by re-purposing shipping containers. We provide living, working, and storage solutions for a wide variety of industries including energy, construction, general industry, and the military.

## FS-M-FRP



- Plastic composite panel adhered to plywood resists moisture, stains, and dents
- White color with cracked-ice texture is easy to spray or wipe clean
- Half or full wall sheeting available



TEXTURE SWATCH

## ABOUT FALCON STRUCTURES

Founded in 2003, Falcon Structures creates safe places by re-purposing shipping containers. We provide living, working, and storage solutions for a wide variety of industries including energy, construction, general industry, and the military.



## SIDE WALL

### FS-M-KITCHENETTE-SIDE WALL

- 7'-6" Kitchenette buildout with electrical appliances
- Fully installed with electrical lines and plumbing hooked up to exterior ports
- Suits everyday kitchen needs with laminate countertop, range with oven and (4) burners, microwave, sink, compact refrigerator, and both upper and lower storage cabinets

## ABOUT FALCON STRUCTURES

Founded in 2003, Falcon Structures creates safe places by re-purposing shipping containers. We provide living, working, and storage solutions for a wide variety of industries including energy, construction, general industry, and the military.



# ORGANIZATION

OPTIONS

## LOCKERS

### FS-M-LOCKERS-QUAD



- Double-tiered, 12" x 12" x 36", grey metal lockers
- Delivered fully assembled and secured to interior wall

## SHELVING

### FS-M-SHELVING UNIT



- 5-shelf steel industrial shelving unit is 72" tall x 36" wide x 18" deep
- Rated for 4000 lbs
- Delivered fully assembled and secured to interior wall

## ABOUT FALCON STRUCTURES

Founded in 2003, Falcon Structures creates safe places by re-purposing shipping containers. We provide living, working, and storage solutions for a wide variety of industries including energy, construction, general industry, and the military.

© Falcon Structures 2016 v.06142016

[www.FalconStructures.com](http://www.FalconStructures.com)

CONTACT US TODAY

512-231-9603

Sales@FalconStructures.com  
7717 Gilbert Rd, Manor, Texas 78653

## HALF BATH

### FS-M-BATH-HALF



- Includes 8" platform to conceal plumbing, exterior plumbing port, vent fan, toilet, sink/vanity, 2.4 kW demand water heater, mirror, and vinyl coin flooring
- Available on container end or positioned in floorplan center

## FULL BATH

### FS-M-BATH-FULL



- Includes 8" platform to conceal plumbing, exterior plumbing port, vent fan, toilet, 3' x 3' shower stall, 40 gal electric water heater, sink/vanity, mirror, and vinyl coin flooring
- Available on container end or positioned in floorplan center

## PLUMBING PORT

### FS-M-PLUMBING PORT



- Painted, welded steel port provides easy exterior access to plumbing hook-ups

## 2" DRAIN

### FS-M-DRAIN-2"



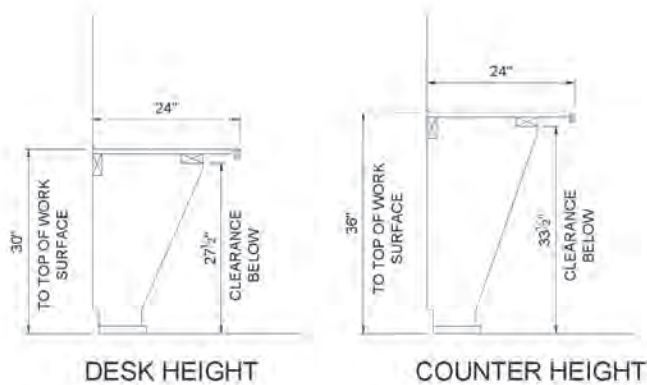
- Direct-to-ground round drain in container floor in nickel bronze finish

## ABOUT FALCON STRUCTURES

Founded in 2003, Falcon Structures creates safe places by re-purposing shipping containers. We provide living, working, and storage solutions for a wide variety of industries including energy, construction, general industry, and the military.

## DESK / COUNTERTOP

### FS-M-WORKSURFACE



- Built-in work surface at your choice of desk or countertop height
- 24" deep and sold in 8' segments
- Laminate top finish available in light or dark grey

## ABOUT FALCON STRUCTURES

Founded in 2003, Falcon Structures creates safe places by re-purposing shipping containers. We provide living, working, and storage solutions for a wide variety of industries including energy, construction, general industry, and the military.

## TWIST LOCK

FS-M-TWIST LOCK-DBL



- Double-sided fastener slips inside container corner castings to secure two vertically stacked containers together

## BRIDGE FITTING

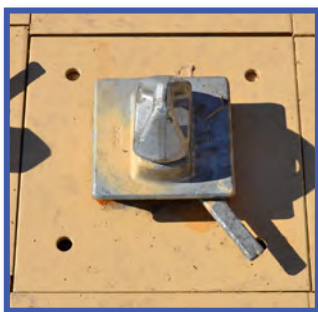
FS-M-BRIDGE FITTING



- Double-sided fastener slips inside container corner castings to secure two containers placed together side-by-side

## FALCON GROUND MOUNTS

FS-M-GROUND MOUNTS



- Single-sided twist locks welded to steel plates with pre-drilled holes
- Allows for easy on-site ground bolting

## ABOUT FALCON STRUCTURES

Founded in 2003, Falcon Structures creates safe places by re-purposing shipping containers. We provide living, working, and storage solutions for a wide variety of industries including energy, construction, general industry, and the military.

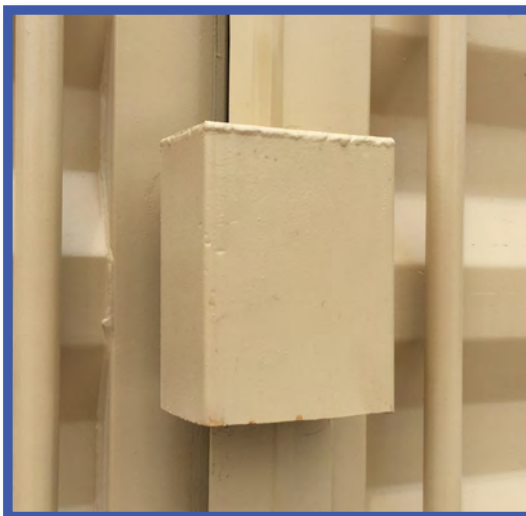


# LOCK BOX

OPTIONS



WITHOUT  
LOCK BOX -  
MUST LOCK @  
LATCH GEAR



## FS-M-LOCK BOX

- Steel box welded to cargo doors protects your lock from bolt cutters and other theft devices
- Lock tabs welded inside box eliminate the need to lock up box at vulnerable latch gear tabs

## ABOUT FALCON STRUCTURES

Founded in 2003, Falcon Structures creates safe places by re-purposing shipping containers. We provide living, working, and storage solutions for a wide variety of industries including energy, construction, general industry, and the military.

© Falcon Structures 2016 v.06142016

[www.FalconStructures.com](http://www.FalconStructures.com)

CONTACT US TODAY

**512-231-9603**

Sales@FalconStructures.com  
7717 Gilbert Rd, Manor, Texas 78653



# TRAILERS

OPTIONS



**A Falcon-designed solution for mobilizing your container with welded on, secure attachment points instead of straps or tie-downs**

## HITCH

**FS-M-TRAILER-HITCH-20'**

- Bumper pull lowboy trailer is approx. 20 ft (L) x 8 ft (W) x 34" (H)
- DOT approved with two 6000 lb axles
- 12,000 lbs GVWR, minimum 3/4 ton tow vehicle required

## GOOSENECK

**FS-M-TRAILER-GOOSENECK-20'**  
**FS-M-TRAILER-GOOSENECK-40'**

- Gooseneck lowboy trailers are approx. 20 ft or 40 ft (L) x 8 ft (W) by 34" (H)
- DOT approved with two 6000 lb axles on 20 ft model, and three 5000 lb axles on 40 ft model
- 20': 12,000 lbs, GVWR minimum 3/4 ton tow vehicle required
- 40': 15,000 lbs GVWR, minimum 1 ton tow vehicle required

## ABOUT FALCON STRUCTURES

Founded in 2003, Falcon Structures creates safe places by re-purposing shipping containers. We provide living, working, and storage solutions for a wide variety of industries including energy, construction, general industry, and the military.

© Falcon Structures 2016 v.06142016

[www.FalconStructures.com](http://www.FalconStructures.com)

CONTACT US TODAY

**512-231-9603**

Sales@FalconStructures.com  
7717 Gilbert Rd, Manor, Texas 78653