

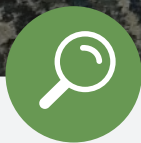
The background image is a photograph of a modern office interior. On the left, a woman with blonde hair and glasses is sitting at a white desk, talking on a phone. The desk has a laptop and some papers on it. In the background, there's a large window and a wooden deck visible through the glass doors on the right. The text 'FALCON' is overlaid in large white letters, with 'STRUCTURES' and 'MODIFICATION OPTIONS' below it in smaller white letters. The text is centered and has a slight shadow effect.

FALCON

STRUCTURES

MODIFICATION
OPTIONS

OPTIONS FOR SHIPPING CONTAINER STRUCTURES



Not seeing what you're
looking for? [Contact us.](#)

We do custom work. Call us at
512-231-1010 so we can discuss
your project.

STRUCTURAL

- [Clear-span](#)
- [Custom wall openings](#)
- [Exterior stairs](#)
- [Door Hardware](#)
- [Overhead doors and concession windows](#)
- [Framed Windows](#)

CLIMATE CONTROL

- [Cooling and heating](#)
- [Ventilation](#)
- [Insulation](#)

FINISH OUT

- [Wall paneling](#)
- [Coin vinyl flooring](#)
- [Vinyl plank flooring](#)
- [Industrial flooring](#)
- [Work surfaces](#)
- [Kitchenette](#)
- [Bathrooms and plumbing](#)
- [Bunk beds](#)
- [Electrical](#)
- [Lights](#)
- [Paint](#)

ACCESSORIES

- [Fastening mechanisms](#)
- [Trailers](#)

CLEAR SPAN



INTERIOR COMPONENTS

- Cut opening framed by 2-inch by 2-inch welded, painted steel tubing
- Structurally reinforced with steel beams and/or columns
- Includes floor plating



EXTERIOR COMPONENTS

- Includes roof flashing
- Connection additionally secured by bridge fittings

CUSTOM WALL OPENINGS



CUT AND FRAMED OPENINGS

- Request openings up to 8-feet by 8-feet
- Openings are framed by 2-inch by 2-inch steel tubing



EXTERIOR STAIRS



EXTERIOR STAIRS

- OSHA Compliant Exterior Stairs
- Ascends approximately 9' to a 5'x5' platform
- 2' wide treads
- Second tread available for high traffic situations
- Bolt-on installation

EXTERIOR DOORS



EXTERIOR DOOR

- Includes lever handle and deadbolt



SLIDING GLASS DOOR

- Provides natural light and convenient access



LIGHTED DOOR

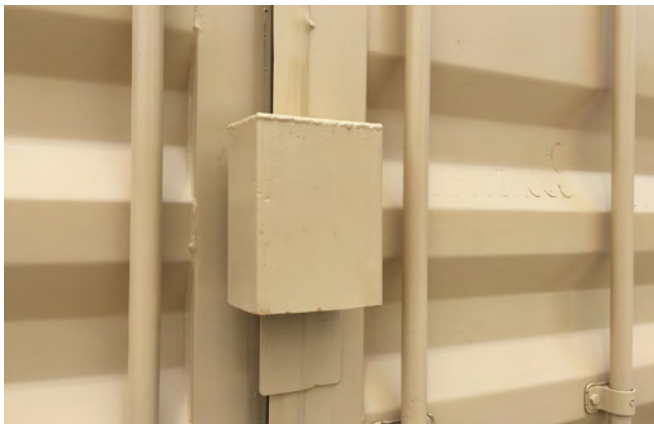
- Improves visibility walking in and out of the container



TIDALWAVE DOOR

- Weather resistant aluminum door with mill finish

DOOR HARDWARE



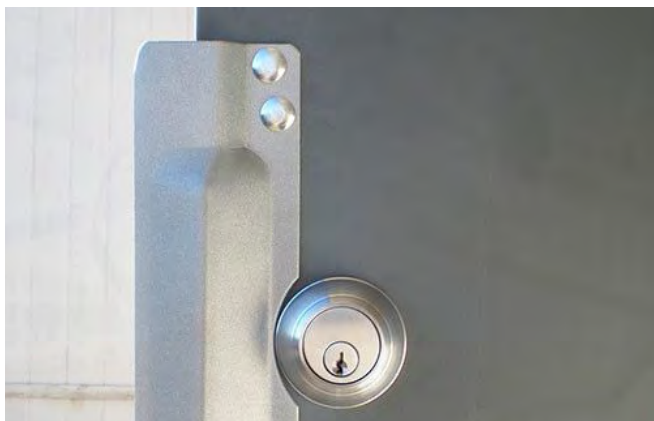
LOCK BOX

- Protects lock from tampering and vandalism



EGRESS HARDWARE

- Includes an additional panic bar and closer



LATCH PROTECTOR

- Protects against tampering and theft

OVERHEAD DOORS AND CONCESSION WINDOWS



ROLL-UP OVERHEAD DOOR

- Select from a range of sizes
- Includes rain pan



CONCESSION WINDOWS

- Select from a range of sizes
- Includes stainless steel counter top



GARAGE STYLE DOOR

- Includes rain pan

FRAMED WINDOWS



STANDARD WINDOW WITH BLINDS

- Double pane window with blinds
- 3 feet x 3 feet



PRIVACY WINDOW

- Double pane window mounted high for privacy
- 32 inches x 14 inches



BURGLAR BARS

- Option for burglar bars to prevent theft



EXTRA LARGE WINDOW

- 3-foot by 6-foot double paned window

COOLING AND HEATING



PTAC UNIT

- 15K PTAC unit with 3kW heat



BARD 2T HVAC

- 2T Bard unit with 5kW heat



WINDOW UNIT

- Smaller 12K through-the-wall unit with 2kW heat



BASE BOARD HEATER

- 1250W baseboard heater

VENTILATION



ACTIVE VENT

- 8-inch by 8-inch vent
- Pulls in air from outside; requires electricity



PASSIVE VENT

- 1-foot by 1-foot vent

INSULATION



STYROFOAM

- R-value of 4 per inch
- Requires no framing



SPRAY FOAM

- R-value of 6 per inch
- Water-resistance, requires no framing



ROLLED BATT

- R-value of 13 for 3.5 inches and 19 for 6 inches
- Requires framing



MINERAL WOOL

- R-value of 13 on wall and 26 on ceiling
- Requires framing

WALL PANELING



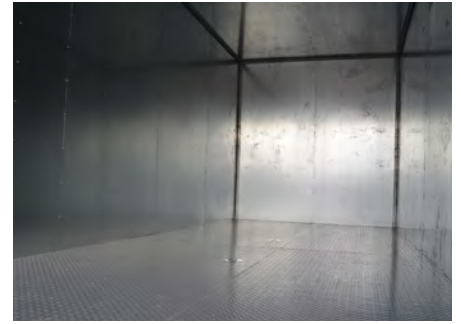
CABINET GRADE WOOD

- Smooth, tight grain
- Seams covered with strips



PLYWOOD

- Course texture
- Seams left exposed



STEEL OR ALUMINUM

- Water-tight



DRYWALL

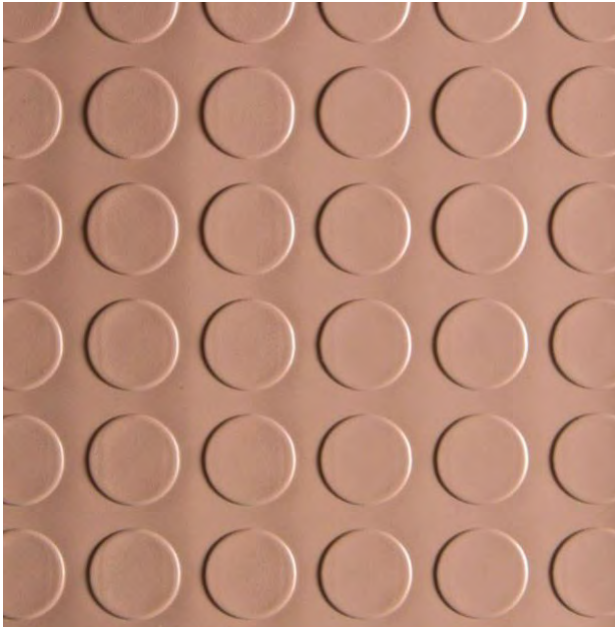
- Consult to see if this solution will work for your project



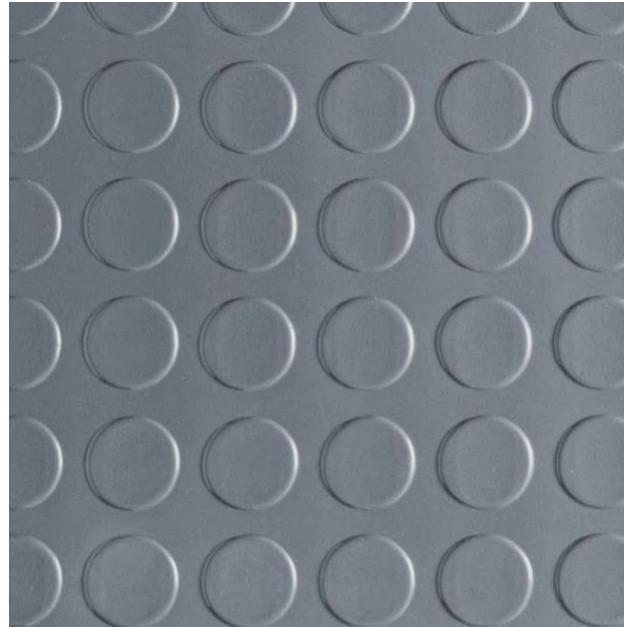
POLYVINYL CHLORIDE (PVC)

- Moisture and chemical resistant
- Hidden fasteners secure panels

COIN VINYL FLOORING



TAN

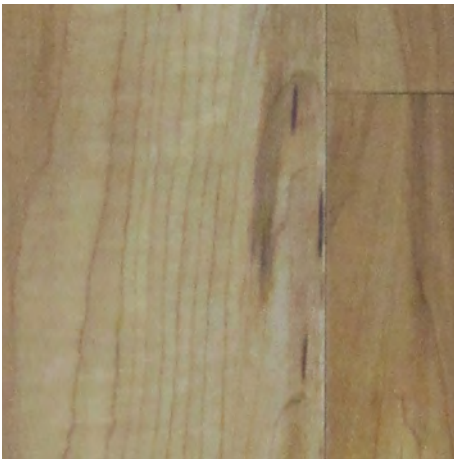


GREY

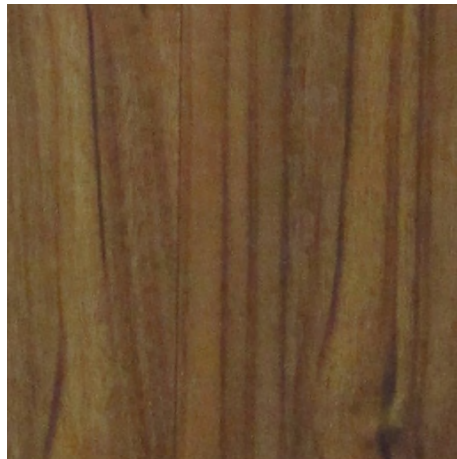
COIN VINYL

- Water resistant
- Rolled out directly over original plywood flooring

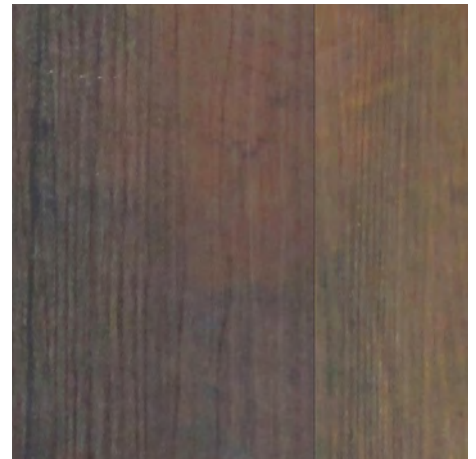
VINYL PLANK FLOORING



LIGHT FINISH



MEDIUM FINISH



DARK FINISH

VINYL PLANK

- Immitation hardwood finishes
- Installed directly over original plywood flooring

INDUSTRIAL FLOORING



ALUMINUM OR STEEL PLATING

- Water tight



TREAD STEEL

- Water tight
- High traction



EPOXY COATING

- Poured over original plywood floors or steel floors
- Slip-resistant

WORK SURFACES



DARK LAMINATE



LIGHT LAMINATE

WORK SURFACES

- Attached to walls of container
- Available at desk and counter height
- Laminate withstands cracks, even if regularly relocated

KITCHENETTE



KITCHENETTE

- Cabinets
- Mini-fridge
- Microwave
- Oven with stove top
- Laminate counter top
- Sink with water heater

BATHROOMS AND PLUMBING



TOILETS



URINALS



TANKLESS WATER
HEATER



DRAINS



STAND UP SHOWERS

PLUMBING ALTERNATIVES



ADVANTAGE SERIES IN MAPLE



PREMIER SERIES IN CHERRY

PLUMBING FREE SINK

- Independent hand-wash sink, no plumbing necessary
- Available in two sizes: 24"x48" and 17"x25"
- Available in two finishes: Cherry and Maple
- Includes a 5-gallon fresh water tank and a 6-gallon waste water tank
- Millwork countertop with deep single stainless-steel basin
- Stainless-steel cabinet bottom with adjustable shelves
- Soap dispenser
- ADA compliant faucet handles
- Swivel casters
- NSF Certified

BUNK BEDS



TWIN MATTRESS BUNK BEDS

- Heavy duty steel frame bunks
- Twin size mattresses
- Four-inch foam core mattresses included

ELECTRICAL



ELECTRICAL PANEL

- Standard size 220V, 125A capacity
- Easily connected exterior service entrance



NETWORK MOUNTING BOARD

- Fire-resistant plywood mounting board for phone and network center, with optional cable-pulls
- Includes adjacent 110V duplex outlet



POWER & DATA DROPS

- Standard 110V duplex outlet
- Ethernet ports
- Additional specs and connections available

LIGHTING



INTERIOR LIGHTS

- Four-foot and two-foot fixtures
- Tube bulbs
- Efficient LED bulbs available



SECURITY LIGHTS

- Exterior mounted incandescent fixture for security and ease of night-use

EXTERIOR PAINT OPTIONS

Prevent Rust and Increase the Longevity of Your Container Exterior

Base Palette



Extended Palette



Custom Palette

If you require a custom color, we can match 15,000+ colors from all major brands.

Because digital color representations may vary, we recommend referencing a RAL color fan (available on Amazon) for the most accurate color representation.

FASTENING MECHANISMS



GROUND MOUNTED TWIST LOCK

- Secure containers to ground at the corner castings
- Ground plate can be bolted to foundations



BRIDGE FITTINGS

- Secure two containers placed side by side, usually for clear spans



DOUBLE SIDED TWIST LOCK

- Secure stacked containers to each other at corner castings



ROOF CAP

- Protective steel plate that covers the seam between container roofs

TRAILERS



BALL HITCH TRAILER

- Available for 20-foot container structures



GOOSE-NECK TRAILER

- Available for 40-foot container structures