



FALCON[™]

STRUCTURES

WORKSPACE



TABLE OF CONTENTS

[Open Container Office](#)

[Open Container Office with Half-Bathroom](#)

[Dual Office](#)

[Dual Office with Half-Bathroom](#)

[Store and Work Container Office](#)

[Work and Store Container Office](#)

[Work Place Container Office](#)

FALCON

STRUCTURES

10-FT OPEN OFFICE SHIPPING CONTAINER

7301301



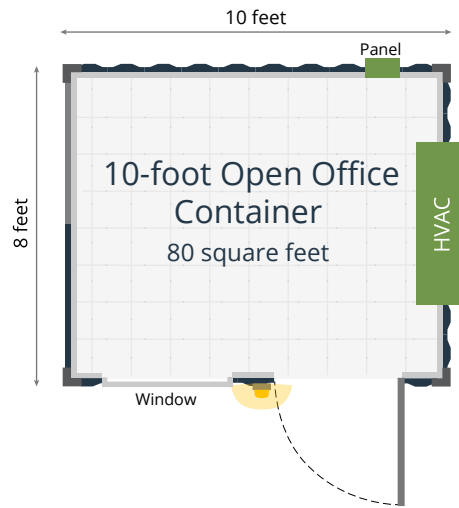
SPECS

- Built in one 10-foot standard, one-trip (close to new) container
- Exterior Paint
- ½-inch textured and painted gypsum drywall over wood framing and batt insulation
- One 3-foot by 3-foot window
- One 3-foot wide exterior personnel door
- One exterior security light adjacent to the personnel door
- Original marine-grade plywood or bamboo floors
- 125A capacity panel with 60A exterior disconnect and data pass-through
- Two standard 4-foot LED light fixtures
- Four duplex 110V outlets
- One data pass-through
- One 15K PTAC unit

7717 Gilbert Rd., Manor, TX 78653
falconstructures.com



Call us at [512.231.1010](tel:512.231.1010) or send an e-mail to
sales@falconstructures.com



EXTERIOR

Width 8-feet

Length 9 feet, 9.75 inches

Height 8-feet, 6-inches

INTERIOR

Width 7-feet

Length 8-feet, 9-inches

Height 7-feet, 4-inches

***All specifications and pricing subject to change without notice.*

****Dimensions are approximate, as containers vary from manufacturer to manufacturer.*

Want to learn more about modified shipping containers?

THE SKY'S THE LIMIT!

If you'd like to learn more about modified shipping container options, give us a call at 512-231-1010 or email us at Sales@FalconStructures.com. We're happy to point you in the right direction!

REQUEST A QUOTE



7717 Gilbert Rd., Manor, TX 78653
falconstructures.com



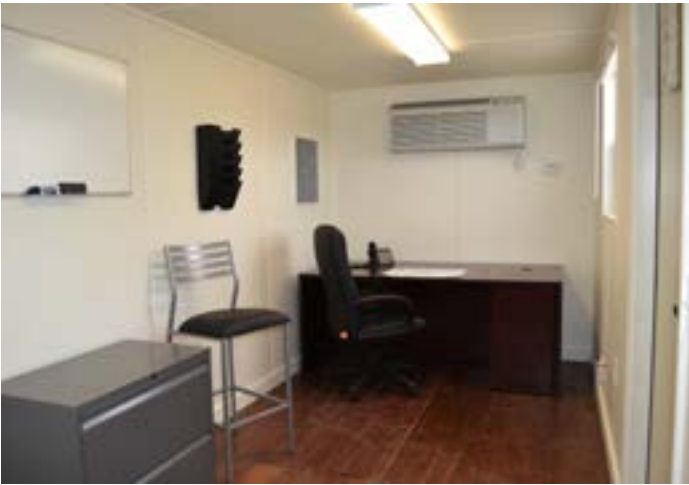
Call us at [512.231.1010](tel:512.231.1010) or send an e-mail to sales@falconstructures.com

FALCON

STRUCTURES

20-FT OPEN OFFICE SHIPPING CONTAINER

7301302



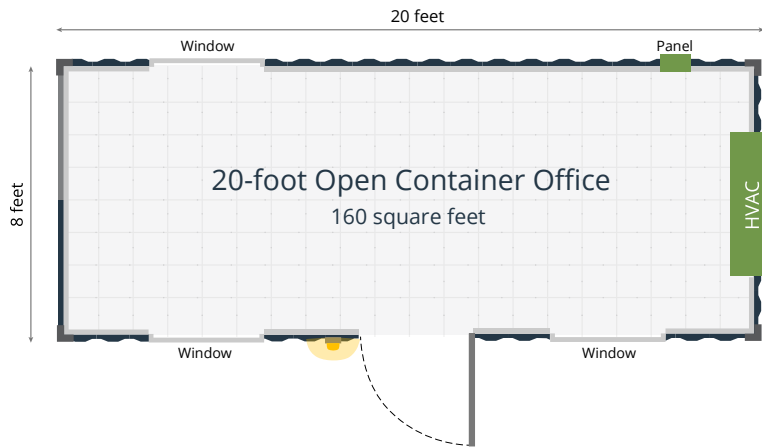
SPECS

- Built in one 20-foot standard, one-trip (close to new) container
- Exterior Paint
- ½-inch textured and painted gypsum drywall over wood framing and batt insulation
- Three 3-foot by 3-foot windows
- One 3-foot wide exterior personnel door
- One exterior security light adjacent to the personnel door
- Original marine-grade plywood or bamboo floors
- 125A capacity panel with 60A exterior disconnect
- Two standard 4-foot LED light fixtures
- Six duplex 110V outlets
- One data pass-through
- One 15K PTAC unit

7717 Gilbert Rd., Manor, TX 78653
falconstructures.com



Call us at [512.231.1010](tel:512.231.1010) or send an e-mail to
sales@falconstructures.com



EXTERIOR

Width 8-feet

Length 19 feet, 10.5 inches

Height* 8-feet, 6-inches

INTERIOR

Width 7-feet

Length 18-feet, 6-inches

Height* 7-feet, 4-inches

**Heights are based off a standard shipping container. Taller high-cube containers are available upon request.*

***All specifications and pricing subject to change without notice.*

****Dimensions are approximate, as containers vary from manufacturer to manufacturer.*

Want to learn more about modified shipping containers?

THE SKY'S THE LIMIT!

If you'd like to learn more about modified shipping container options, give us a call at 512-231-1010 or email us at Sales@FalconStructures.com. We're happy to point you in the right direction!

REQUEST A QUOTE



7717 Gilbert Rd., Manor, TX 78653
falconstructures.com



Call us at [512.231.1010](tel:512.231.1010) or send an e-mail to sales@falconstructures.com



40-FT OPEN OFFICE SHIPPING CONTAINER

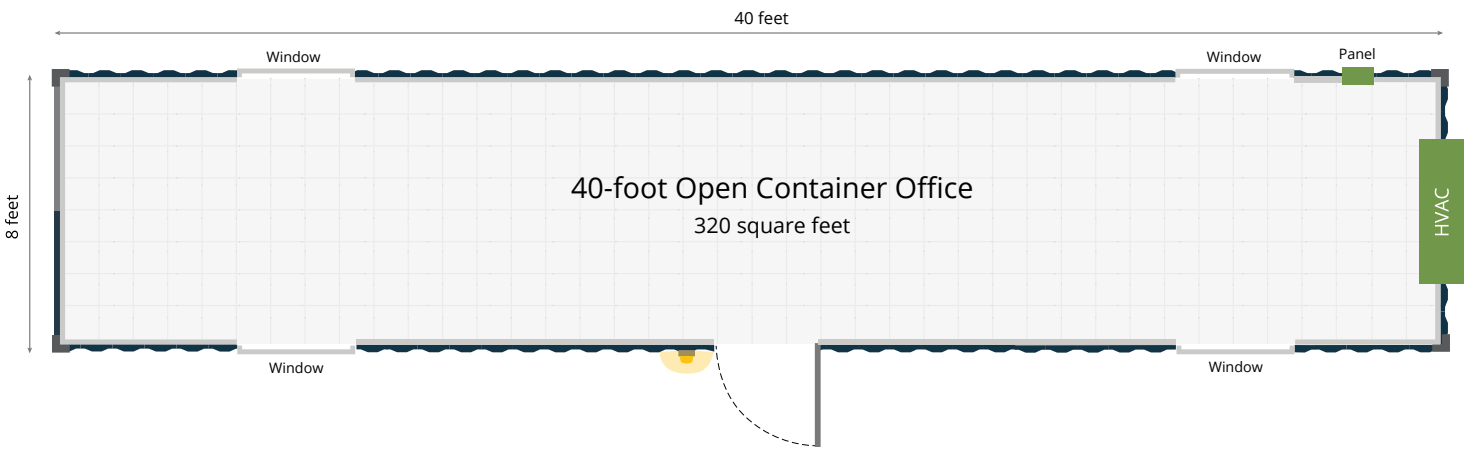
7301306



SPECS

- Built in one 40-foot standard, one-trip (close to new) container
- Exterior Paint
- ½-inch textured and painted gypsum drywall over wood framing and batt insulation
- Four 3-foot by 3-foot windows
- One 3-foot wide exterior personnel door
- One exterior security light adjacent to the personnel door
- Original marine-grade plywood or bamboo floors
- 125A capacity panel with 60A exterior disconnect
- Four standard 4-foot LED light fixtures
- Six duplex 110V outlets
- One data pass through
- One 15K PTAC unit





EXTERIOR

| | |
|---------|------------------|
| Width | 8-feet |
| Length | 40-feet |
| Height* | 8-feet, 6-inches |

INTERIOR

| | |
|---------|------------------|
| Width | 7-feet |
| Length | 39-feet |
| Height* | 7-feet, 4-inches |

*Heights are based off a standard shipping container. Taller high-cube containers are available upon request.

**All specifications and pricing subject to change without notice.

***Dimensions are approximate, as containers vary from manufacturer to manufacturer.

Want to learn more
about modified
shipping containers?

REQUEST A QUOTE



7717 Gilbert Rd., Manor, TX 78653
falconstructures.com



Call us at [512.231.1010](tel:512.231.1010) or send an e-mail to
sales@falconstructures.com

FALCON

STRUCTURES

20-FT OPEN OFFICE SHIPPING CONTAINER WITH HALF-BATHROOM

7302301



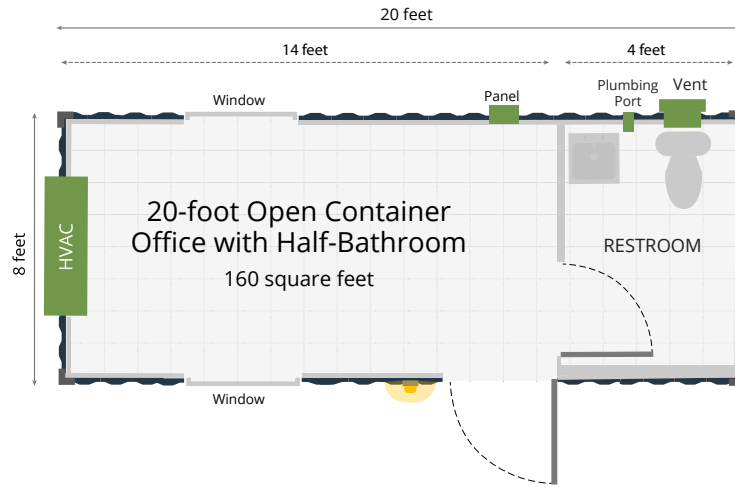
SPECS

- Built-in one 20-foot standard, one-trip (close to new) container
- Exterior Paint
- ½-inch textured and painted gypsum drywall over wood framing and batt insulation
- Two 3-foot by 3-foot windows
- One 3-foot wide exterior personnel door
- One 2-foot, 6-inch wide interior personnel door on the partition wall
- One exterior security light adjacent to the personnel door
- Original marine-grade plywood or bamboo floors in office area
- Vinyl coin flooring in bathroom area
- 125A capacity panel with 80A exterior disconnect
- Two standard 4-foot LED light fixtures
- One standard 2-foot LED light fixture in bathroom
- Five duplex 110V outlets
- One data pass-through
- One 15K PTAC unit
- One exterior ¾-inch water supply connection for cold water
- One exterior 3-inch drainage connection and 2-inch vent connection
- One 6.5kw electric tankless heater
- One ventilation fan
- One toilet
- One sink vanity with mirror

7717 Gilbert Rd., Manor, TX 78653
falconstructures.com



Call us at [512.231.1010](tel:512.231.1010) or send an e-mail to sales@falconstructures.com



EXTERIOR

Width 8-feet

Length 19 feet, 10.5 inches

Height* 8-feet, 6-inches



INTERIOR OFFICE AREA

Width 7-feet

Length 14-feet

Height* 7-feet, 4-inches

INTERIOR BATHROOM AREA

Width 6-feet, 9-inches

Length 4-feet

Height* 7-feet, 4-inches

**Heights are based off a standard shipping container. Taller high-cube containers are available upon request.*

***All specifications and pricing subject to change without notice.*

****Dimensions are approximate, as containers vary from manufacturer to manufacturer.*

Want to learn more about modified shipping containers?

REQUEST A QUOTE

7717 Gilbert Rd., Manor, TX 78653
falconstructures.com



Call us at [512.231.1010](tel:512.231.1010) or send an e-mail to sales@falconstructures.com



40-FT OPEN OFFICE SHIPPING CONTAINER WITH HALF-BATHROOM

7302303



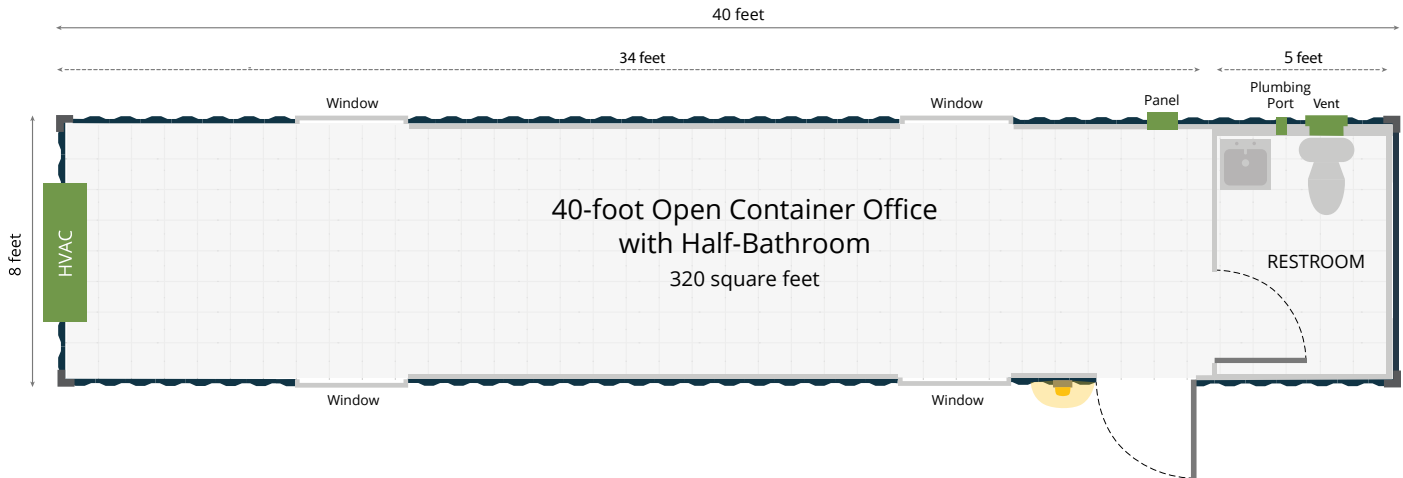
SPECS

- Built in one 40-foot standard, one-trip (close to new) container
- Exterior Paint
- ½-inch textured and painted gypsum drywall over wood framing and batt insulation
- Four 3-foot by 3-foot windows
- One 3-foot wide exterior personnel door
- One 2-foot, 6-inch wide interior personnel door on partition wall
- One exterior security light adjacent to the personnel door
- Original marine-grade plywood or bamboo floors in office area
- Vinyl coin flooring in bathroom
- 125A capacity panel with 80A exterior disconnect
- Three standard 4-foot LED light fixtures
- One standard 2-foot LED light fixture
- Seven duplex 110V outlets
- One data pass-through
- One 15K PTAC unit
- One exterior ¾-inch water supply connection for cold water
- One exterior 3-inch drainage connection and 2-inch vent connection
- One 6.5kw electric tankless heater
- One ventilation fan
- One toilet
- One sink vanity with mirror

7717 Gilbert Rd., Manor, TX 78653
falconstructures.com



Call us at [512.231.1010](tel:512.231.1010) or send an e-mail to sales@falconstructures.com



EXTERIOR

Width 8-feet

Length 40-feet

Height* 8-feet, 6-inches

**Heights are based off a standard shipping container. Taller high-cube containers are available upon request.*

***All specifications and pricing subject to change without notice.*

****Dimensions are approximate, as containers vary from manufacturer to manufacturer.*

Want to learn more
about modified
shipping containers?

REQUEST A QUOTE

INTERIOR OFFICE AREA

Width 7-feet

Length 33-feet

Height* 7-feet, 4-inches

INTERIOR BATHROOM AREA

Width 7-feet

Length 5-feet

Height* 7-feet, 4-inches



40-FT DUAL OFFICE SHIPPING CONTAINER

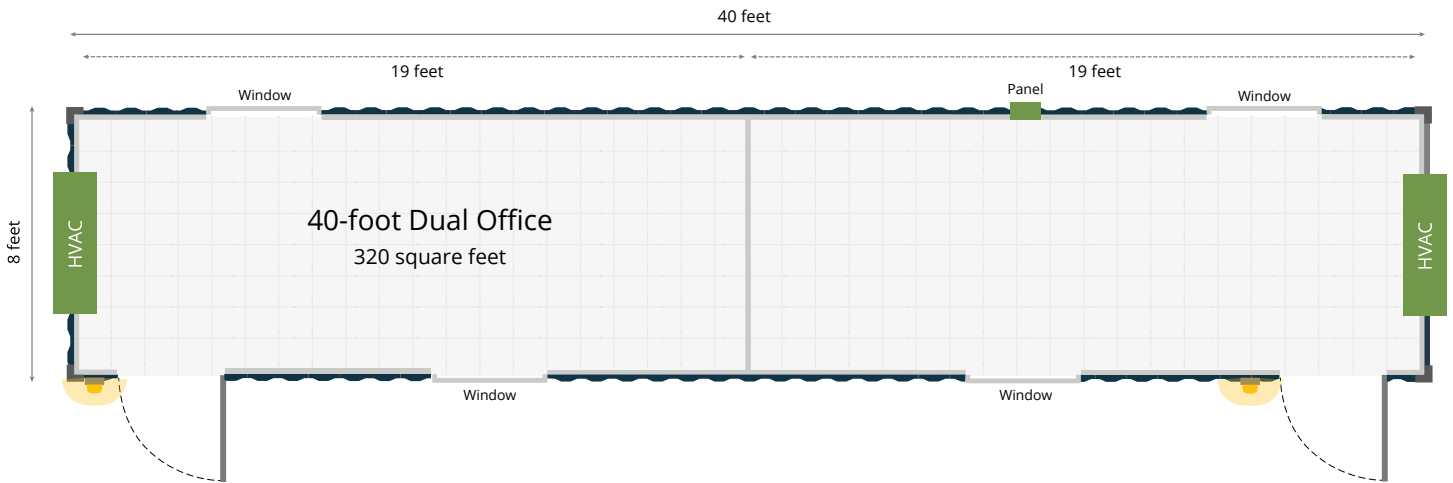
7301308



SPECS

- Built in one 40-foot standard, one-trip (close to new) container
- Exterior Paint
- ½-inch textured and painted gypsum drywall over wood framing and batt insulation
- Four 3-foot by 3-foot windows
- Two 3-foot wide exterior personnel doors
- Two exterior security lights, one adjacent to each personnel door
- Original marine-grade plywood or bamboo floors
- 125A capacity panel with 60A exterior disconnect
- Four standard 4-foot LED light fixtures
- Eight duplex 110V outlets
- One data pass-through
- Two 15K PTAC units
- One partition wall





EXTERIOR

Width 8-feet

Length 40-feet

Height* 8-feet, 6-inches

EACH INTERIOR OFFICE AREA

Width 7-feet

Length 19-feet

Height* 7-feet, 4-inches

**Heights are based off a standard shipping container. Taller high-cube containers are available upon request.*

***All specifications and pricing subject to change without notice.*

****Dimensions are approximate, as containers vary from manufacturer to manufacturer.*

Want to learn more
about modified shipping
containers?

REQUEST A QUOTE



7717 Gilbert Rd., Manor, TX 78653
falconstructures.com



Call us at [512.231.1010](tel:512.231.1010) or send an e-mail to
sales@falconstructures.com



40-FT DUAL OFFICE SHIPPING CONTAINER WITH HALF-BATHROOM

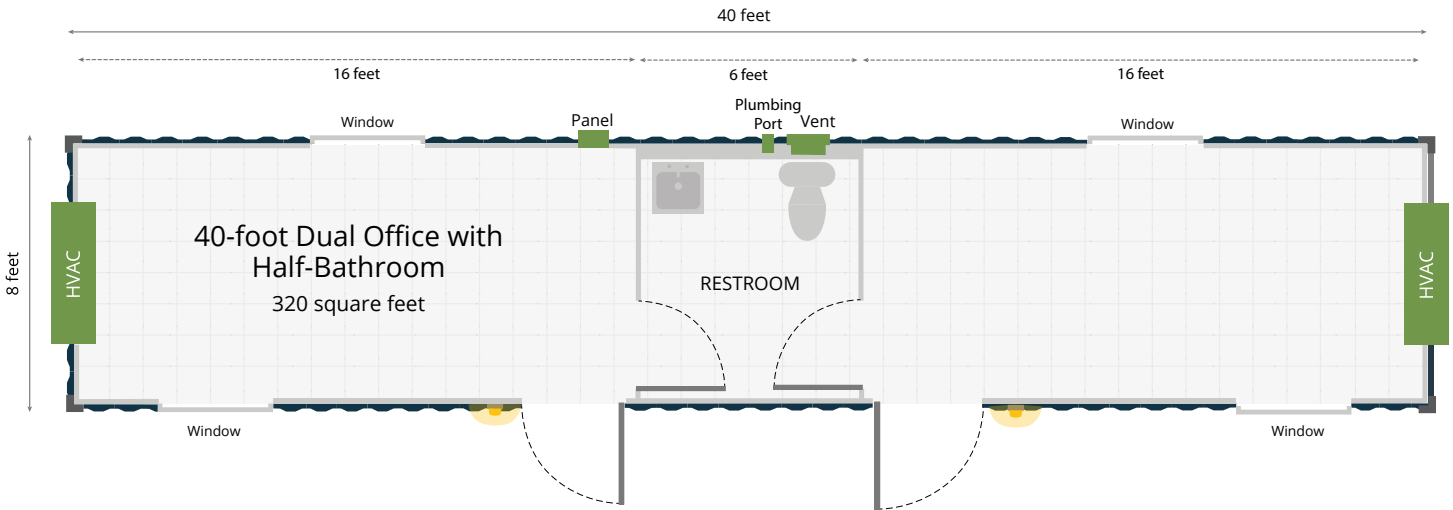
7302305



SPECS

- Built in one 40-foot standard, one-trip (close to new) container
- Exterior Paint
- ½-inch textured and painted gypsum drywall over wood framing and batt insulation
- Four 3-foot by 3-foot windows
- Two 3-foot wide exterior personnel doors
- Two 2-foot, 6-inch wide interior personnel doors on partition walls
- Two exterior security lights, one adjacent to each personnel door
- Original marine-grade plywood or bamboo floors in office area
- Vinyl coin flooring in the restroom area
- 125A capacity panel with 80A exterior disconnect
- Four standard 4-foot LED light fixtures
- One standard 2-foot LED light fixture in bathroom
- Eight duplex 110V outlets
- One data pass-through
- Two 15K PTAC units
- One exterior ¾-inch water supply connection for cold water
- One exterior 3-inch drainage connection and 2-inch vent connection
- One 6.5kw electric tankless water heater
- One ventilation fan
- One toilet
- One sink vanity with mirror





EXTERIOR

| | |
|---------|------------------|
| Width | 8-feet |
| Length | 40-feet |
| Height* | 8-feet, 6-inches |

**Heights are based off a standard shipping container.
Taller high-cube containers are available upon request.
**All specifications and pricing subject to change
without notice.
***Dimensions are approximate, as containers vary
from manufacturer to manufacturer.*

Want to learn more
about modified
shipping containers?

THE SKY'S THE LIMIT!

REQUEST A QUOTE

INTERIOR OFFICE

| | |
|---------|------------------|
| Width | 7-feet, 6-inches |
| Length | 16-feet |
| Height* | 7-feet, 4-inches |

INTERIOR BATHROOM

| | |
|---------|------------------|
| Width | 6-feet, 9-inches |
| Length | 6-feet |
| Height* | 7-feet, 4-inches |

FALCON

STRUCTURES

20-FT STORE AND WORK SHIPPING CONTAINER OFFICE

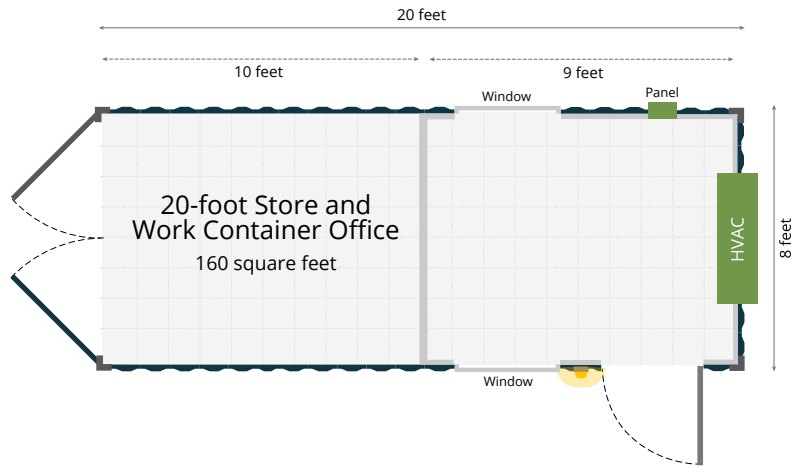
7301304



SPECS

- Built in one 20-foot standard, one-trip (close to new) container
- Exterior Paint
- ½-inch textured and painted gypsum drywall over wood framing and batt insulation
- Two 3-foot by 3-foot windows
- One 3-foot wide exterior personnel door
- One exterior security light adjacent to the personnel door
- Operable cargo doors
- Original marine-grade plywood or bamboo floors
- 125A capacity panel with 60A exterior disconnect
- Two standard 4-foot LED light fixtures
- Three duplex 110V outlets in office area
- One duplex 110V outlet in the storage area
- One data pass-through
- One 15K PTAC unit in office section





EXTERIOR

Width 8-foot

Length 19 feet, 10.5 inches

Height* 8-foot, 6-inches

INTERIOR OF STORAGE AREA

Width 7-foot, 8-inches

Length 10-foot

Height* 7-foot, 5-inches

INTERIOR OF OFFICE AREA

Width 7-foot

Length 9-foot

Height* 7-foot, 4-inches



Want to learn more about modified shipping containers?

REQUEST A QUOTE

**Heights are based off a standard shipping container. Taller high-cube containers are available upon request.*

***All specifications and pricing subject to change without notice.*

****Dimensions are approximate, as containers vary from manufacturer to manufacturer.*

FALCON STRUCTURES

40-FT STORE AND WORK SHIPPING CONTAINER OFFICE

7301310



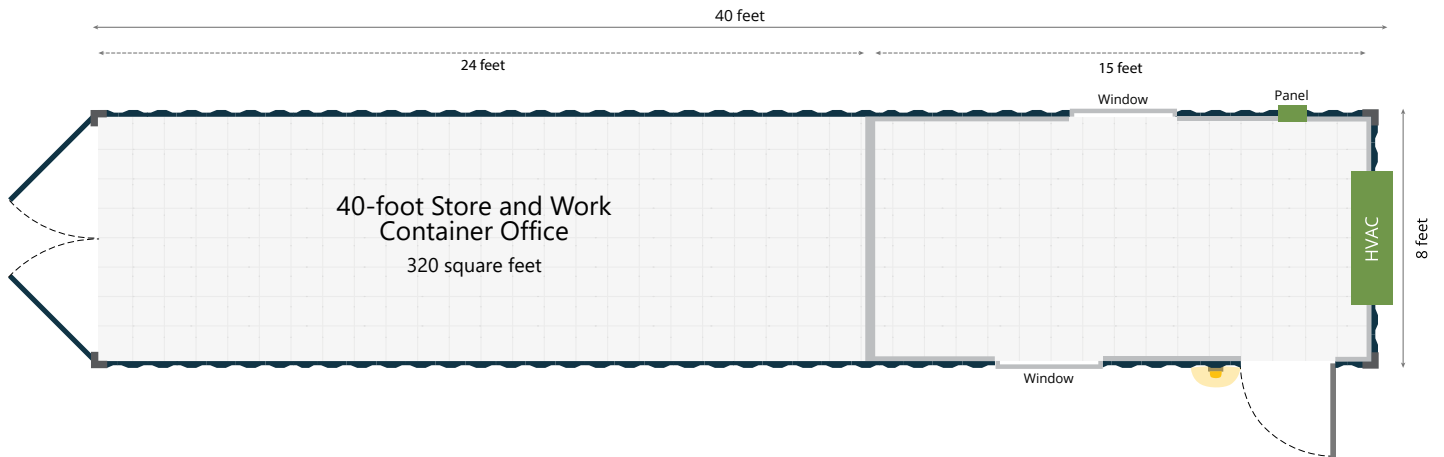
SPECS

- Built in one 40-foot standard, one-trip (close to new) container
- Exterior Paint
- ½-inch textured and painted gypsum drywall over wood framing and batt insulation
- Two 3-foot by 3-foot windows
- One 3-foot wide exterior personnel door
- One exterior security light adjacent to the personnel door
- Operable cargo doors
- Original marine-grade plywood or bamboo floors
- 125A capacity panel with 60A exterior disconnect
- Four standard 4-foot LED light fixtures
- Four duplex 110V outlets in office area
- One duplex 110V outlet in the storage area
- One data pass-through
- One 15K PTAC unit

7717 Gilbert Rd., Manor, TX 78653
falconstructures.com



Call us at [512.231.1010](tel:512.231.1010) or send an e-mail to
sales@falconstructures.com



EXTERIOR

Width 8-feet

Length 40-feet

Height* 8-feet, 6-inches

**Heights are based off a standard shipping container. Taller high-cube containers are available upon request.*

***All specifications and pricing subject to change without notice.*

****Dimensions are approximate, as containers vary from manufacturer to manufacturer.*

Want to learn more about modified shipping containers?

REQUEST A QUOTE

INTERIOR STORAGE AREA

Width 7-feet, 8-inches

Length 24-feet

Height* 7-feet, 5-inches

INTERIOR OFFICE AREA

Width 7-feet

Length 15-feet

Height* 7-feet, 4-inches

FALCON

STRUCTURES

40-FT WORK AND STORE SHIPPING CONTAINER OFFICE

7301312



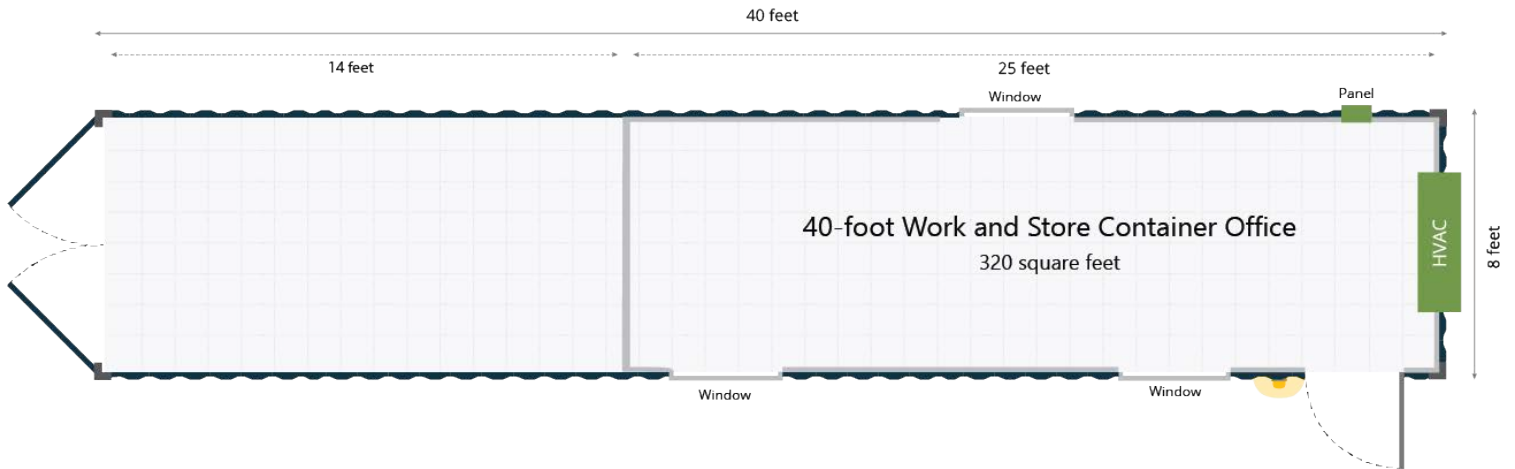
SPECS

- Built in one 40-foot standard, one-trip (close to new) container
- Exterior Paint
- ½-inch textured and painted gypsum drywall over wood framing and batt insulation
- Three 3-foot by 3-foot windows
- One 3-foot wide exterior personnel door
- One exterior security light adjacent to the personnel door
- Operable cargo doors
- Original marine-grade plywood or bamboo floors
- 125A capacity panel with 60A exterior disconnect
- Four standard 4-foot LED light fixtures
- Six duplex 110V outlets in office area
- One duplex 110V outlet in storage area
- One data pass-through
- One 15K PTAC unit

7717 Gilbert Rd., Manor, TX 78653
falconstructures.com



Call us at [512.231.1010](tel:512.231.1010) or send an e-mail to
sales@falconstructures.com



EXTERIOR

Width 8-feet

Length 40-feet

Height* 8-feet, 6-inches

**Heights are based off a standard shipping container. Taller high-cube containers are available upon request.*

***All specifications and pricing subject to change without notice.*

****Dimensions are approximate, as containers vary from manufacturer to manufacturer.*

INTERIOR OFFICE AREA

Width 7-feet

Length 25-feet

Height* 7-feet, 4-inches

INTERIOR STORAGE AREA

Width 7-feet, 8-inches

Length 14-feet

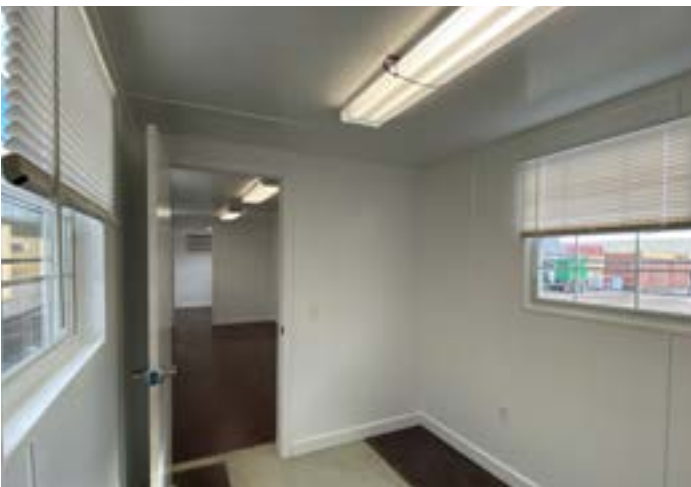
Height* 7-feet, 5-inches

Want to learn more about modified shipping containers?

REQUEST A QUOTE

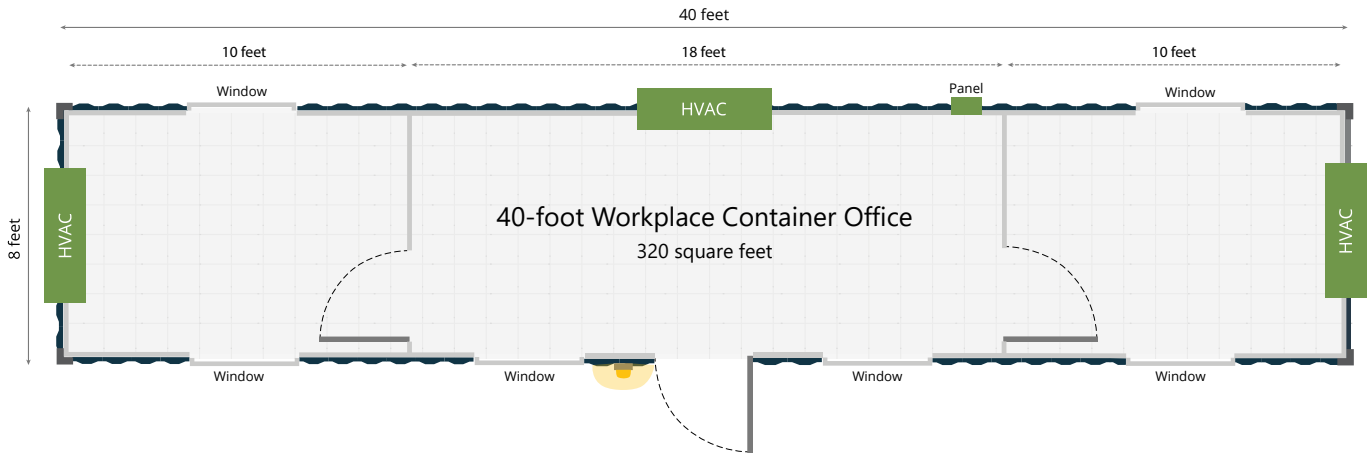
40-FT WORKPLACE SHIPPING CONTAINER WITH CONFERENCE ROOM

7301314



SPECS

- Built in one 40-foot standard, one-trip (close to new) container
- Exterior Paint
- ½-inch textured and painted gypsum drywall over wood framing and batt insulation
- Six 3-foot by 3-foot windows
- One 3-foot wide exterior personnel door
- Two 2-foot, 6-inch wide interior personnel doors on partition walls
- One exterior security light adjacent to the personnel door
- Original marine-grade plywood or bamboo floors
- 125A capacity panel with 100A exterior disconnect
- Four standard 4-foot LED light fixtures
- Nine duplex 110V outlets
- One data pass-through
- Three 15K PTAC units



EXTERIOR

Width 8-feet

Length 40-feet

Height* 8-feet, 6-inches

**Heights are based off a standard shipping container. Taller high-cube containers are available upon request.*

***All specifications and pricing subject to change without notice.*

****Dimensions are approximate, as containers vary from manufacturer to manufacturer.*

INTERIOR CONFERENCE AREA

Width 7-feet

Length 18-feet

Height* 7-feet, 4-inches

INTERIOR OF EACH OFFICE AREA

Width 7-feet

Length 10-feet

Height* 7-feet, 4-inches

Want to learn more about modified shipping containers?

REQUEST A QUOTE