

A photograph of a blue multi-container structure with an external staircase. The structure is made of blue corrugated metal. The staircase is also made of blue metal and has a handrail. The text 'FALCON' is overlaid on the image in white, with a trademark symbol. Below it, the word 'STRUCTURES' is written in white, flanked by two horizontal lines. Below that, the words 'Multi-Container' and 'Structures' are written in white, stacked vertically. The background shows a clear blue sky and some other containers in the distance.

FALCON™

STRUCTURES

Multi-Container
Structures



TABLE OF CONTENTS

[2-Story Observation Workspace](#)

[20-Foot Double Container Structure](#)

[40-Foot Double Container Structure](#)

FALCONTM

STRUCTURES

3-20FT 2-STORY OBSERVATION WORKSPACE

7800001



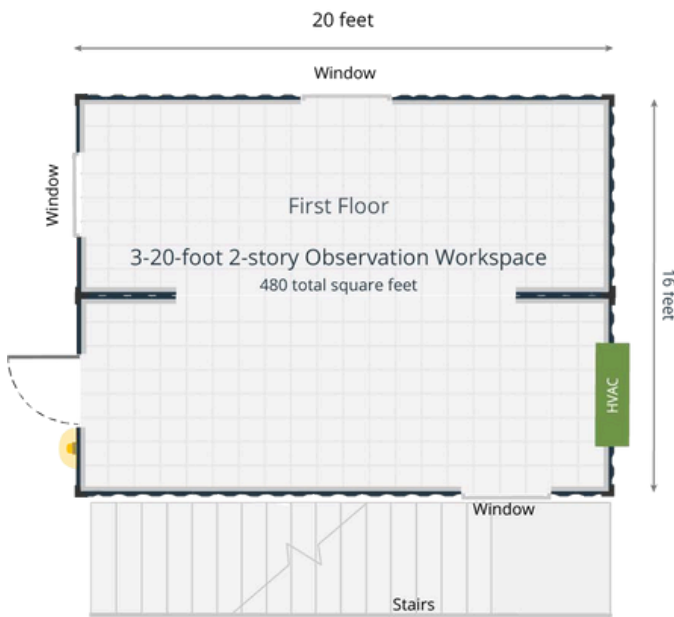
FIRST FLOOR SPECS

- Two 20-foot standard height or high-cube (extra 12 inches) one-trip containers
- Exterior paint choices from base palette
- ½-inch textured and painted gypsum drywall over wood framing and batt insulation
- Three 3-foot by 3-foot operable windows
- One 3-foot wide exterior personnel door with window
- One exterior security light adjacent to the exterior personnel door
- Original marine-grade plywood or bamboo floors
- 125A capacity panel with 100A exterior disconnect
- Four standard 4-foot light fixtures, each with two 4-foot LED tubes
- Five duplex 110V outlets
- One data pass through
- Falcon cross-over electrical system
- One 2T BARD unit

SECOND FLOOR SPECS

- One 20-foot standard height or high cube (extra 12 inches) one-trip containers
- Exterior paint choices from base palette
- ¼-inch painted wood paneling over wood framing and batt insulation
- Two 6-foot by 3-foot fixed-pane windows
- One 3-foot wide exterior personnel door with window
- One exterior security light adjacent to the exterior personnel door
- Original marine-grade plywood or bamboo floors
- Two standard 4-foot light fixtures, each with two 4-foot LED tubes
- Five duplex 110V outlets
- One data pass through
- One PTAC unit with 15K BTU cooling, 3.5kW heating capacity
- One OSHA steel staircase with 4-foot landing and double handrails

Think Inside the Box.®

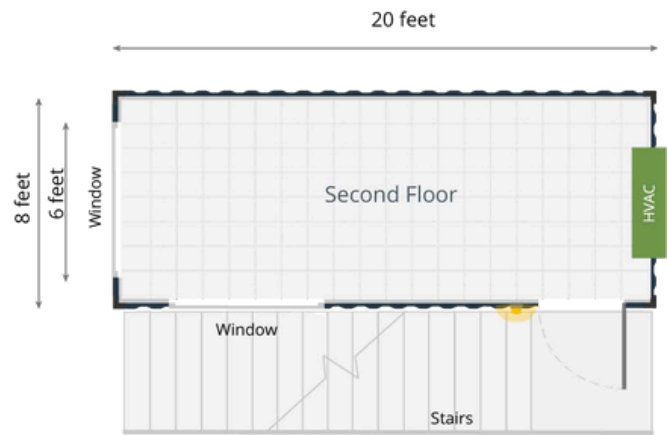


FIRST FLOOR EXTERIOR

Width	16-feet
Length	19 feet, 10.5 inches
Height*	8-feet, 6-inches

FIRST FLOOR INTERIOR

Width	14-feet
Length	18-feet, 6-inches
Height*	7-feet, 4-inches



SECOND FLOOR EXTERIOR

Width	8-feet
Length	19 feet, 10.5 inches
Height*	8-feet, 6-inches

SECOND FLOOR INTERIOR

Width	7-feet
Length	18-feet, 6-inches
Height*	7-feet, 4-inches

*Standard height. Actual container may be a high-cube (additional 12 inches) depending on supply.

**All specifications and pricing subject to change without notice.

***Dimensions are approximate, as containers vary from manufacturer to manufacturer.

Add custom features to meet your needs.

EXPLORE MODIFICATION OPTIONS



7717 Gilbert Rd., Manor, TX 78653
falconstructures.com



Call us at [512.231.1010](tel:512.231.1010) or send an e-mail to
sales@falconstructures.com

FALCONTM

STRUCTURES

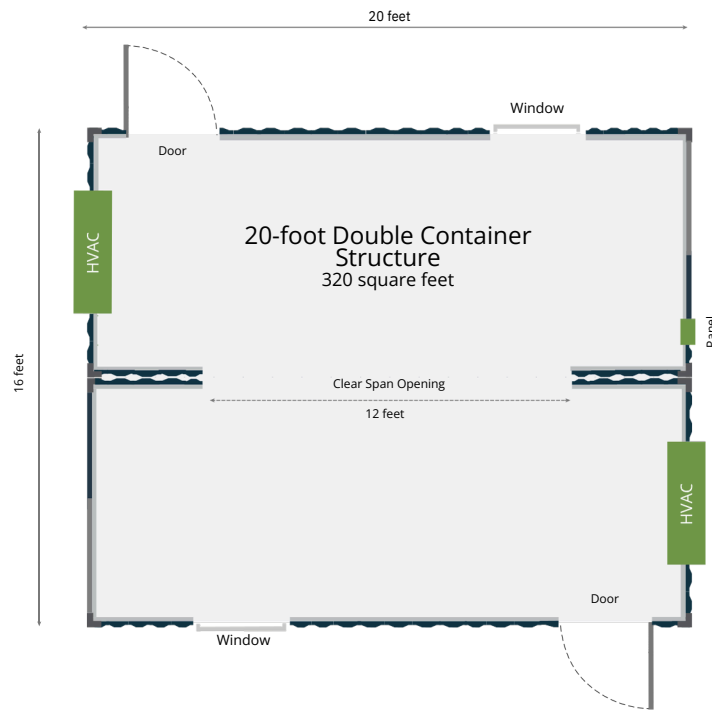
20-FOOT DOUBLE CONTAINER STRUCTURE



SPECS

- Two 20-foot standard height or high-cube (extra 12 inches) one-trip containers
- Exterior paint choices from base palette
- 12-foot clear opening between units
- ½-inch textured and painted gypsum drywall over wood framing and batt insulation
- Two 3-foot by 3-foot windows
- Two 3-foot wide exterior personnel doors
- One exterior security light adjacent to each exterior personnel door
- Original marine-grade plywood or bamboo floors
- 125A capacity panel with 60A exterior disconnect
- Four 4-foot LED light fixtures
- Eight duplex 110V outlets
- One data pass-through
- Falcon cross-over electrical system
- Two PTAC unit with 15K BTU cooling, 3.5 kW heating capacity

Think Inside the Box.®



EXTERIOR

Width	16 feet
Length	19 feet, 10.5 inches
Height*	8-feet, 6-inches

INTERIOR

Width	15 feet
Length	18 feet, 6 inches
Height*	7 feet, 4 inches

*Standard height. Actual container may be a high-cube (additional 12 inches) depending on supply.

**All specifications and pricing subject to change without notice.

***Dimensions are approximate, as containers vary from manufacturer to manufacturer.

Want to learn more
about modified
shipping containers?

REQUEST A QUOTE



7717 Gilbert Rd., Manor, TX 78653
falconstructures.com



Call us at [512.231.1010](tel:512.231.1010) or send an e-mail to
sales@falconstructures.com

FALCONTM

STRUCTURES

40-FOOT DOUBLE CONTAINER STRUCTURE



SPECS

- Two 40-foot standard height or high-cube (extra 12 inches) one-trip containers
- Exterior paint choices from base palette
- Three 12-foot clear openings between units
- ½-inch textured and painted gypsum drywall over wood framing and batt insulation
- Four 3-foot by 3-foot windows
- Two 3-foot wide exterior personnel doors

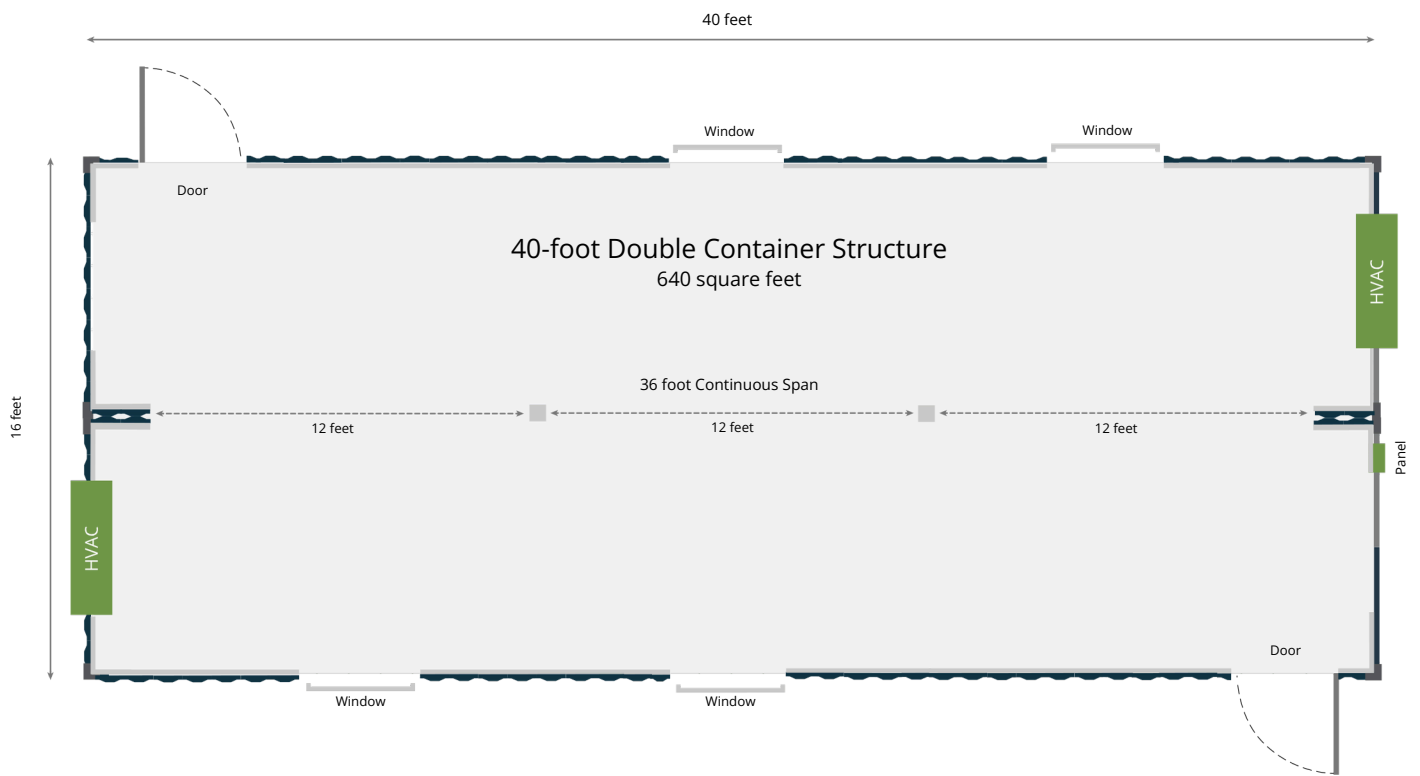
- One exterior security light adjacent to each exterior personnel door
- Original marine-grade plywood or bamboo floors
- 125A capacity panel with 60A exterior disconnect
- Eight 4-foot LED light fixtures
- Twelve duplex 110V outlets
- One data pass-through
- Falcon cross-over electrical system
- Two PTAC unit with 15K BTU cooling, 3.5 kW heating capacity

Think Inside the Box.®

7717 Gilbert Rd., Manor, TX 78653
falconstructures.com



Call us at [512.231.1010](tel:512.231.1010) or send an e-mail to
sales@falconstructures.com



EXTERIOR

Width	16 feet
Length	40 feet
Height*	8 feet, 6 inches

INTERIOR

Width	15 feet
Length	38 feet, 7 inches
Height*	7 feet, 4 inches

*Standard height. Actual container may be a high-cube (additional 12 inches) depending on supply.

**All specifications and pricing subject to change without notice.

***Dimensions are approximate, as containers vary from manufacturer to manufacturer.

Want to learn more
about modified shipping
containers?

REQUEST A QUOTE



7717 Gilbert Rd., Manor, TX 78653
falconstructures.com



Call us at [512.231.1010](tel:512.231.1010) or send an e-mail to
sales@falconstructures.com